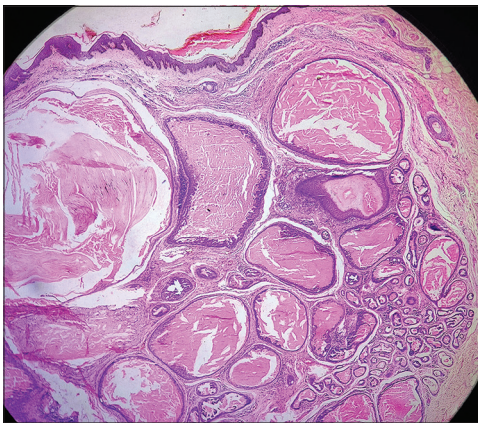


## Solitary Skin Colored Facial Nodule

A woman in her late 50s presented with an asymptomatic slow growing skin colored nodule on the face for the past



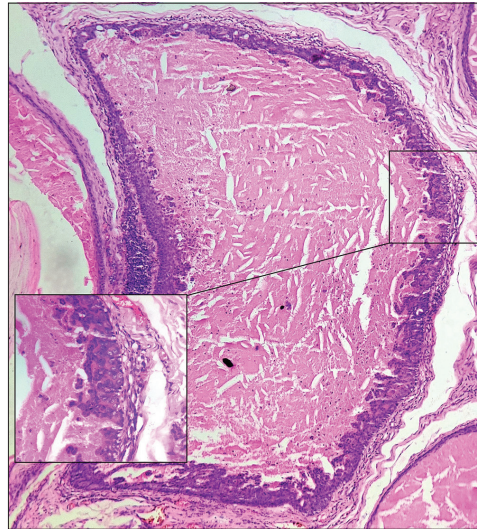
**Figure 1: Skin colored nodule on the right cheek**



**Figure 2: Numerous cystic spaces in the dermis lined by multilayered epithelium. Note the lining epithelium forming papillary projections into the lumen which is filled with eosinophilic amorphous material [H and E, x5]**

6–8 months [Figure 1]. It had developed spontaneously and was non-tender with soft-firm consistency. The rest of the cutaneous and systemic examination was normal. Complete excision and histological analysis revealed numerous cystic and ductal structures in the dermis separated by fibrocollagenous stroma [Figure 2]. These structures were lined by multilayered epithelium composed of cuboidal/polygonal cells forming papillary excrescences at places. The lumen showed eosinophilic amorphous material [Figure 3].

### What is your diagnosis?



**Figure 3: High power view showing the lining epithelium composed of multi-layered polygonal to cuboidal cells [H and E, x10, inset: x40]**

**Keshavmurthy  
A. Adya,  
Arun C. Inamadar**

*Department of Dermatology,  
Venereology and Leprosy,  
Shri B M Patil Medical  
College, Hospital and Research  
Center, BLDE (Deemed to  
be University), Vijayapur,  
Karnataka, India*

**Address for correspondence:**  
Dr. Arun C. Inamadar,  
Department of Dermatology,  
Venereology and Leprosy, Shri  
B M Patil Medical College,  
Hospital and Research  
Center, BLDE (Deemed  
to be University),  
Vijayapur - 586 103, Karnataka,  
India.  
E-mail: aruninamadar@gmail.  
com

Access this article online

Website: [www.idoj.in](http://www.idoj.in)

DOI: 10.4103/idoj.idoj\_631\_22

Quick Response Code:



**How to cite this article:** Adya KA, Inamadar AC. Solitary skin colored facial nodule. Indian Dermatol Online J 0;0:0.

**Received:** 21-Nov-2022. **Revised:** 12-Dec-2022.

**Accepted:** 13-Dec-2022. **Published:** 25-May-2023.

This is an open access journal, and articles are distributed under the terms of the Creative Commons Attribution-NonCommercial-ShareAlike 4.0 License, which allows others to remix, tweak, and build upon the work non-commercially, as long as appropriate credit is given and the new creations are licensed under the identical terms.

**For reprints contact:** WKHLRPMedknow\_reprints@wolterskluwer.com

## Answer

Papillary eccrine adenoma (tubulopapillary hidradenoma – eccrine type)

## Discussion

Papillary eccrine adenoma is a rare benign adnexal tumor first described by Rulon and Helwig. It is commonly seen on the extremities of the middle aged dark skinned individuals with a female preponderance. Clinically, it presents as a non-discrete slow growing, skin colored, dome shaped nodule. Histologically, it is characterized by a well-defined dermal tumor exhibiting epithelial aggregates containing cystic or ductal structures that are lined by multilayered epithelium with intraluminal papillary excrescences. The cells are polygonal, and exhibit variable clear cell change without significant atypia or mitoses. Although both eccrine and apocrine differentiation can be seen, the former is much frequent. Immunohistochemically, the cells are reactive for CEA, S100, and EMA, indicating differentiation towards eccrine secretory epithelium. Histological differential diagnoses include syringocystadenoma papilliferum, hidradenoma papilliferum, papillary eccrine carcinoma, and digital adenocarcinoma. The latter is seen in fingers or toes of the elderly and is difficult to differentiate histologically. It usually shows a more infiltrative growth pattern, cytological atypia, and numerous mitotic figures. Myoepithelial markers conventionally thought to indicate benignity may also be expressed in adenocarcinoma. Papillary eccrine adenoma is effectively treated by complete excision which is usually not followed by any recurrence.<sup>[1-6]</sup>

Papillary eccrine adenoma also bears quite a resemblance to tubular apocrine adenoma, and hence, both are grouped under the term ‘tubulopapillary hidradenoma’ and the subtype (eccrine or apocrine) designated as applicable.<sup>[6]</sup> Although immunohistochemical confirmation could not be obtained because of the lack of facilities, multilayered epithelium forming papillary excrescences extending into the lumen, the presence of amorphous eosinophilic material within the lumen, predominance

of cuboidal cells lacking cytoplasmic granules, and the absence of columnar cells with apical snouts/decapitation secretion pointed towards eccrine origin (rather than apocrine), and hence, the diagnosis of papillary eccrine adenoma was established.<sup>[1,6]</sup>

## Declaration of patient consent

The authors certify that they have obtained all appropriate patient consent forms. In the form the patient has given her consent for her images and other clinical information to be reported in the journal. The patient understands that her name and initials will not be published and due efforts will be made to conceal her identity, but anonymity cannot be guaranteed.

## Financial support and sponsorship

Nil.

## Conflicts of interest

There are no conflicts of interest.

## References

1. Ambooken B, Thomas M, Jisha KT. Papillary eccrine adenoma in a 5-year-old girl altered by application of Thuja ointment. *J Cutan Aesthet Surg* 2020;13:370-1.
2. Wick MR, Barnhill RL. Sweat gland tumors. In: Barnhill RL, Crowson AN, Magro CM, Pipekorn MW, editors. *Dermatopathology*. 3<sup>rd</sup> ed. New York: McGraw Hill Companies, Inc.; 2010. p. 725-65.
3. Laxmisha C, Thappa D, Jayanthi S. Papillary eccrine adenoma. *Indian J Dermatol Venereol Leprol* 2004;70:370-2.
4. Calonje E. Tumours of skin appendages. In: Griffiths CEM, Barker J, Bleiker T, Chalmers R, Creamer D editors. *Rook's Textbook of Dermatology*. 9<sup>th</sup> ed. Oxford: Wiley-Blackwell; 2016. p. 138.1-48.
5. Geethamani V, Shetty A, Chiwdappa V. Aggressive digital papillary adenocarcinoma – A rare entity posing a diagnostic challenge. *Malays J Med Sci* 2014;21:54-6.
6. Ahmed TSS, Del Priore J, Seykora JT. Tumors of the epidermal appendages. In: Elder DE, Elenitsas R, Johnson LB Jr, Murphy GF, Xu X, editors. *Lever's Histopathology of Skin*. 10<sup>th</sup> ed. Philadelphia: Lippincot Williams & Wilkins; 2009. p. 851-909.